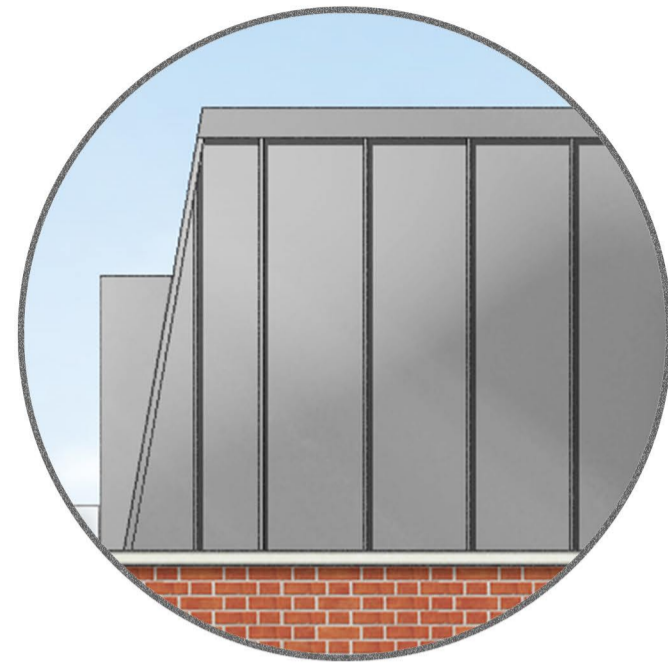
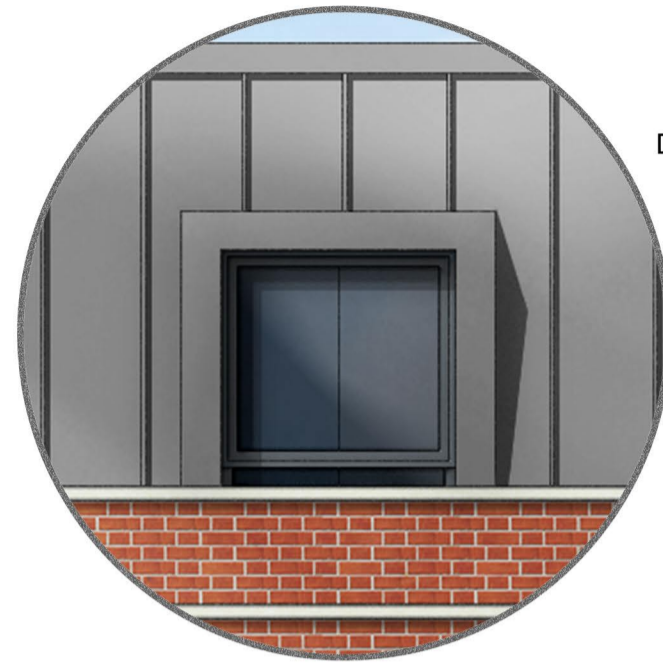


# BLOCK 1 - CHARACTER OVERVIEW

WITHIN THE MIXED-USE HIGH STREET PARKLAND



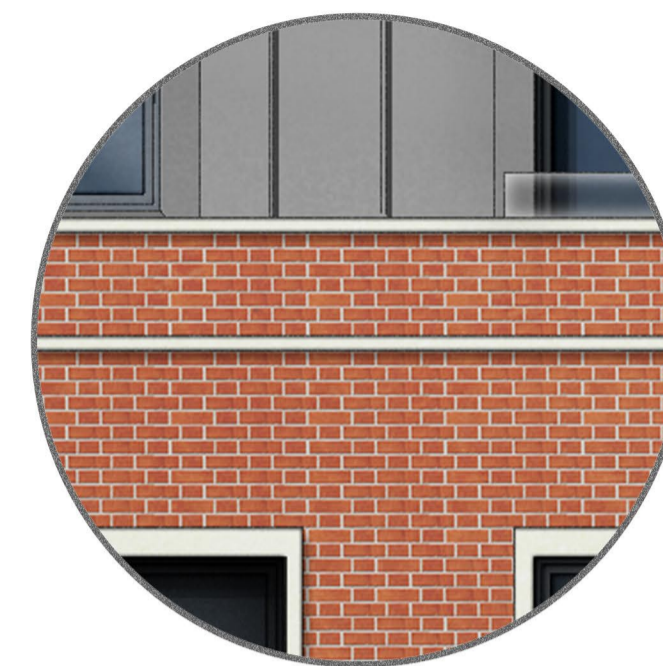
Contemporary mansard zinc-seamed roof



Dormer windows



Glass balconies



Stone capping to parapet and parallel band to create a traditional frieze to the top of the building



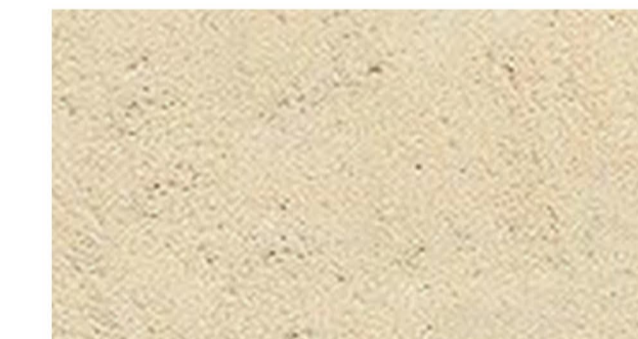
Rain water pipes recessed back into brick through a stepped channel



Side Elevation - Facing Station Hill (NTS)  
 # - Denotes Obscured Glazing



Block 1 Character Overview



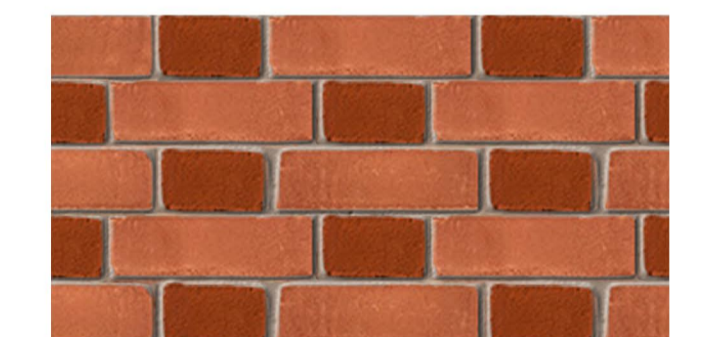
Stone material used on banding and window surrounds



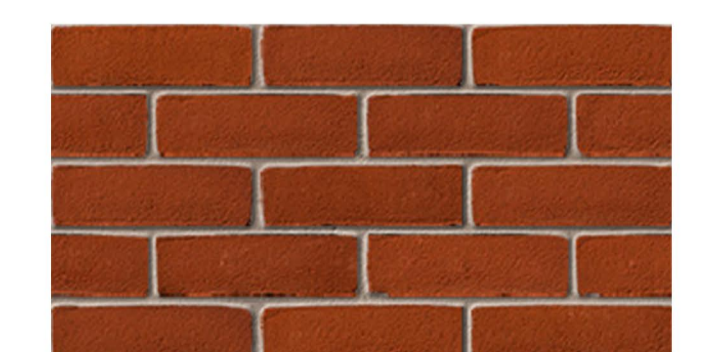
Flemish bond brick pattern used on the upper floors above the stone banding and commercial facades



Red brick colour used in main facade



Flemish bond with feature contrast brick wrapping around ground floor elevations and commercial facades



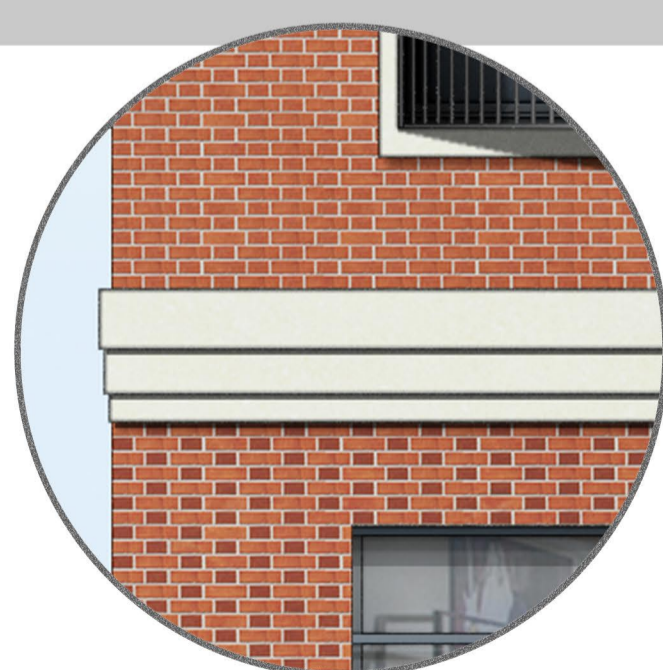
Feature brick colour used to create visual pattern within the commercial frontage



Stone surrounds around all first and second storey windows with a contemporary low profile grey coloured window



Balconies inset with a contemporary low profile grey coloured window



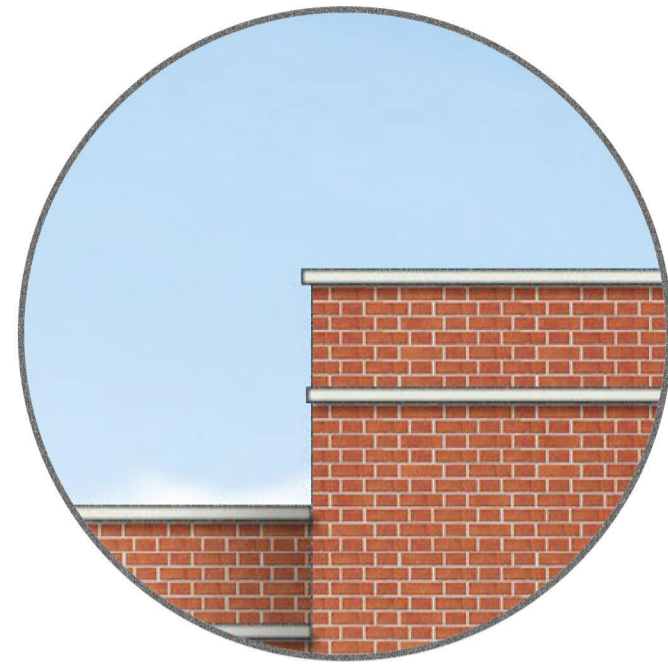
Tiered stone horizontal banding around the building to visually differentiate to ground level commercial frontage from the residential properties above



Flat glass porches

# BLOCK 2 - CHARACTER OVERVIEW

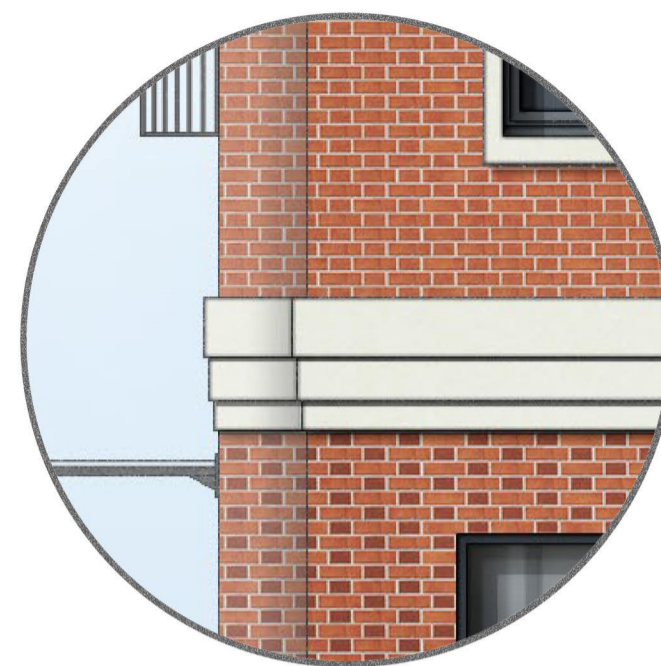
WITHIN THE MIXED-USE HIGH STREET PARKLAND



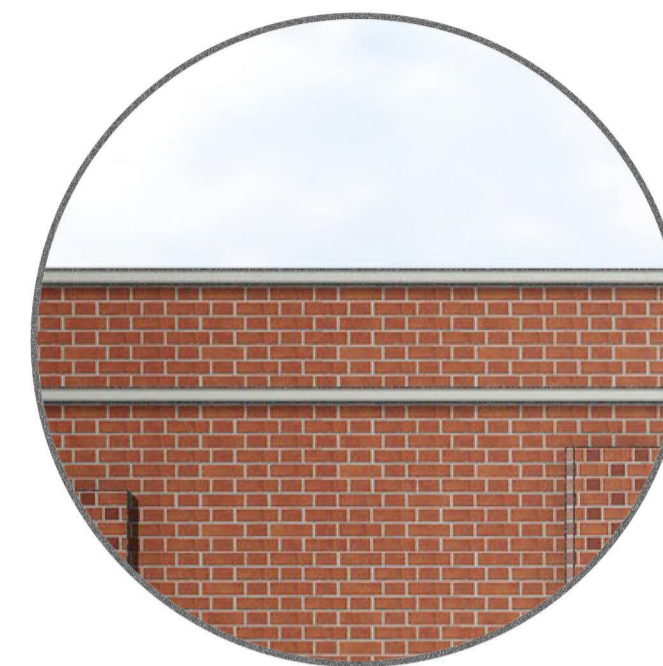
Flat roof hidden behind feature parapet wall detail



Set back balconies with grey wrought iron railings



Tiered stone horizontal banding to visually differentiate to ground level commercial frontage from the residential properties above



Stone capping to parapet and parallel band to create a traditional frieze to the top of the building



Rain water pipes recessed back into brick through a stepped channel



Side Elevation (NTS)



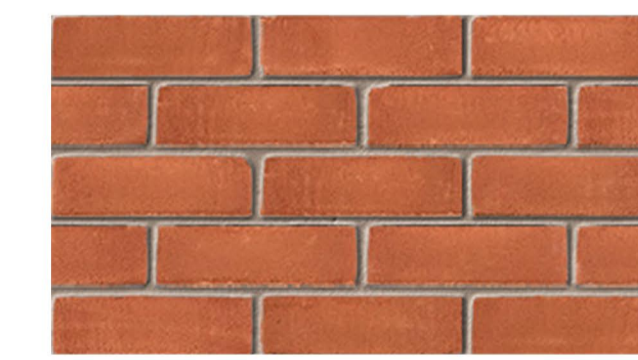
Block 2 Character Overview



Stone material used on banding and window surrounds



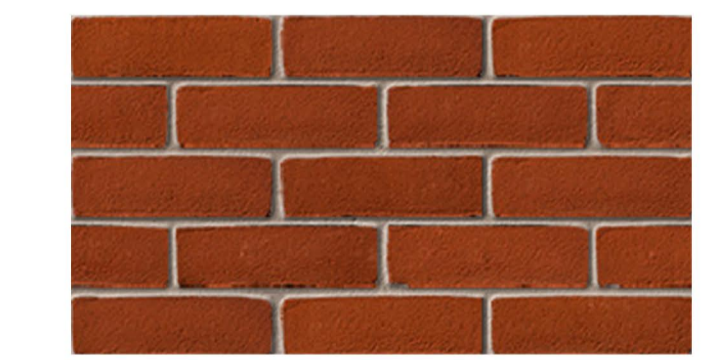
Flemish bond brick pattern used in the upper floors above the stone banding and commercial facades



Red brick colour used in main facade



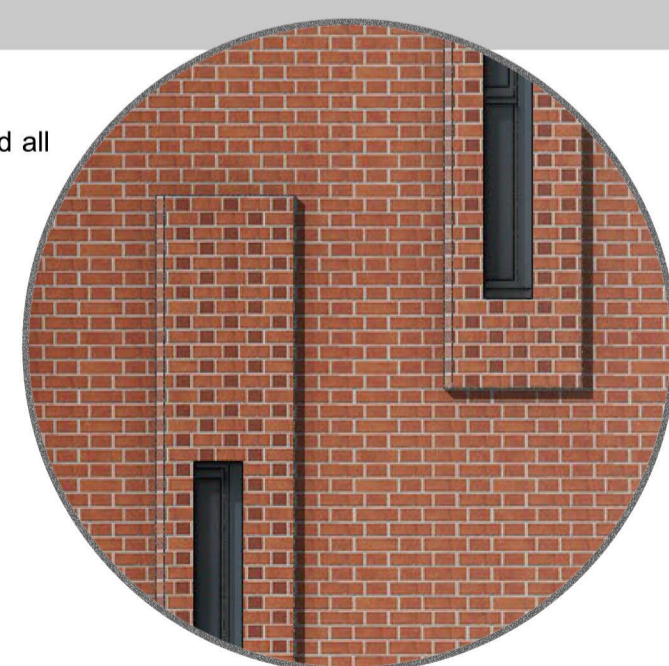
Flemish bond with feature contrast brick wrapping around ground floor elevations



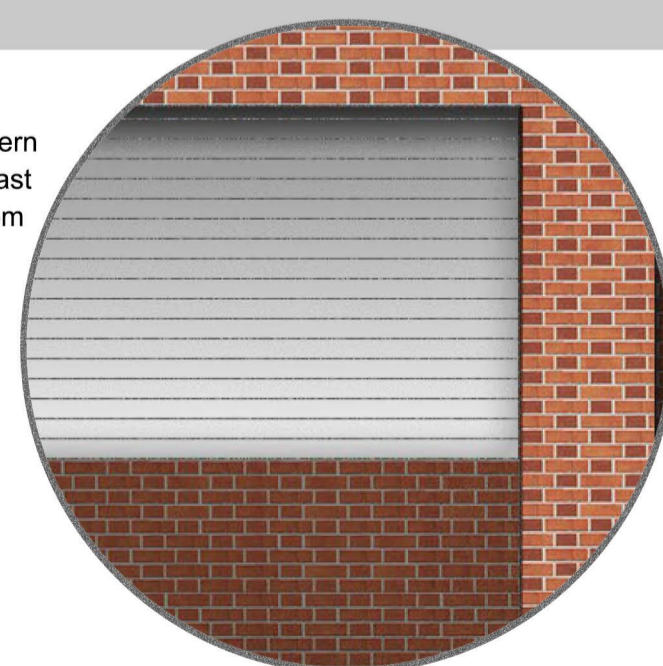
Feature brick colour used to create visual pattern within the commercial frontage



Stone surrounds around all first and second storey windows with a contemporary low profile grey coloured window



Brick surrounds on southern facing windows, in contrast brick positioned in random locations to create visual interest



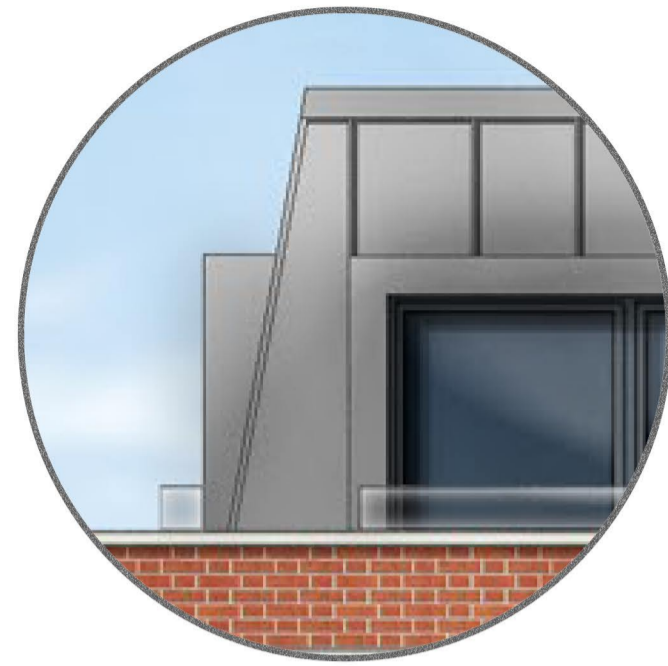
Roller shutters on entrance to the parking, adding to the security of the building



Flat glass porches

# BLOCK 3 - CHARACTER OVERVIEW

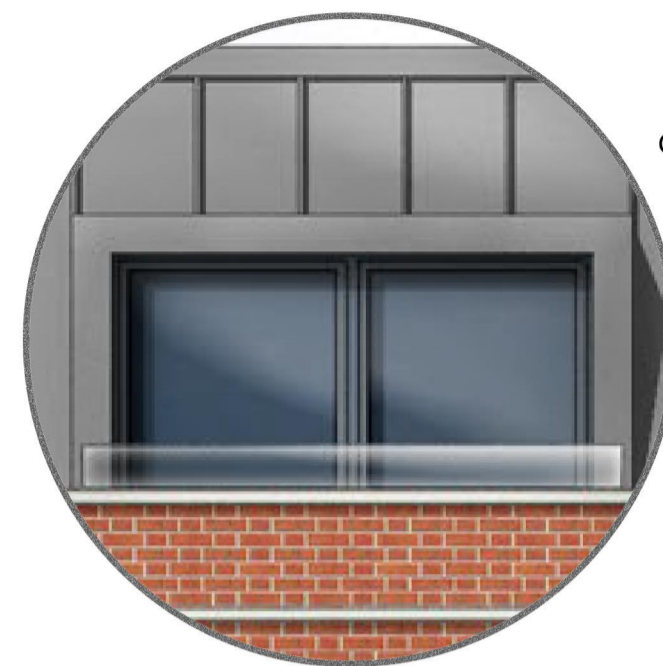
WITHIN THE MIXED-USE HIGH STREET PARKLAND



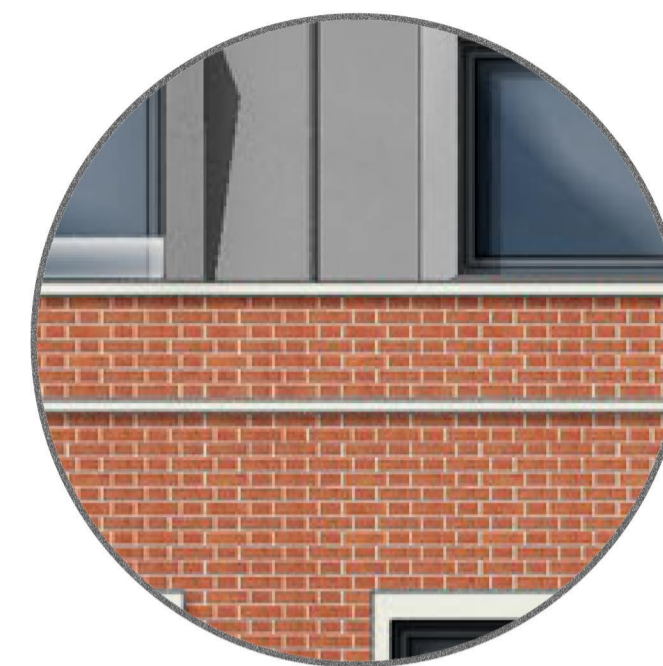
Contemporary mansard zinc seamed roof



Velux windows



Glass balconies



Stone capping to parapet and parallel band to create a traditional frieze to the top of the building



Rain water pipes recessed back into brick through a stepped channel



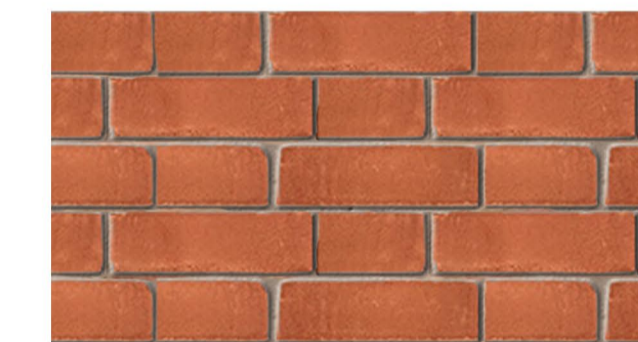
Side Elevation



Block 3 Character Overview



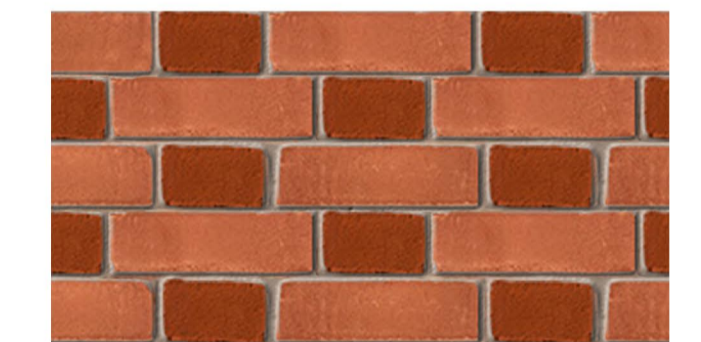
Stone material used on banding and window surrounds



Flemish bond brick pattern used in the upper floors above the stone banding and commercial facades



Red brick colour used in main facade



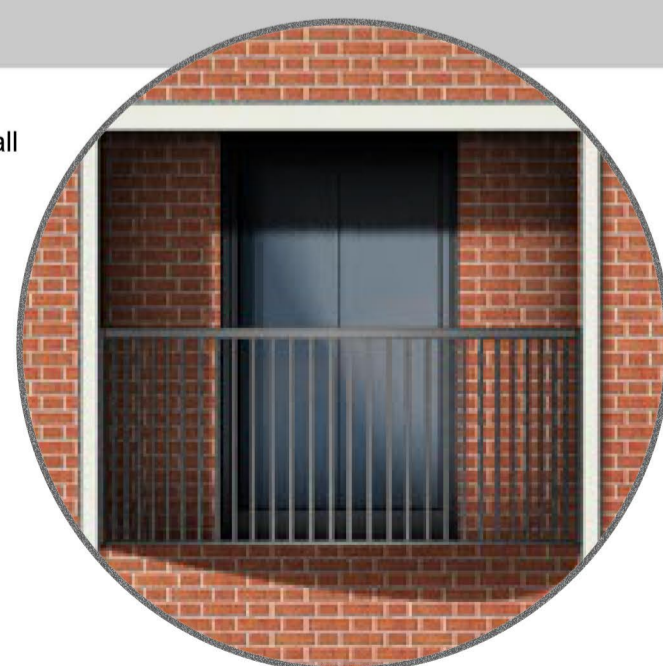
Flemish bond with feature contrast brick wrapping around ground floor elevations



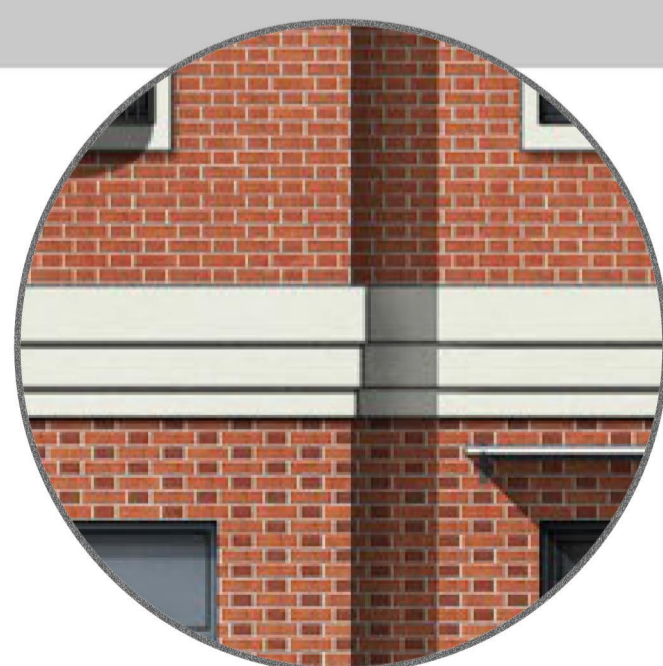
Feature brick colour used to create visual pattern within the commercial frontage



Stone surrounds around all first and second storey windows inset with a contemporary low profile grey coloured window



Ornate wrought iron balconies set back into the building



Tiered stone horizontal banding to visually differentiate ground level commercial frontage from the residential properties above



Flat glass porches

# THE MEWS GARDENS - CHARACTER OVERVIEW



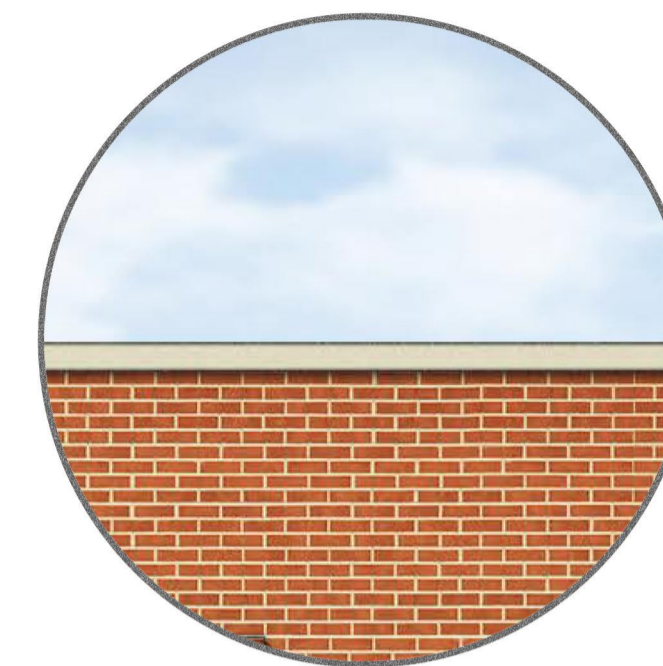
Slate grey tiled roof



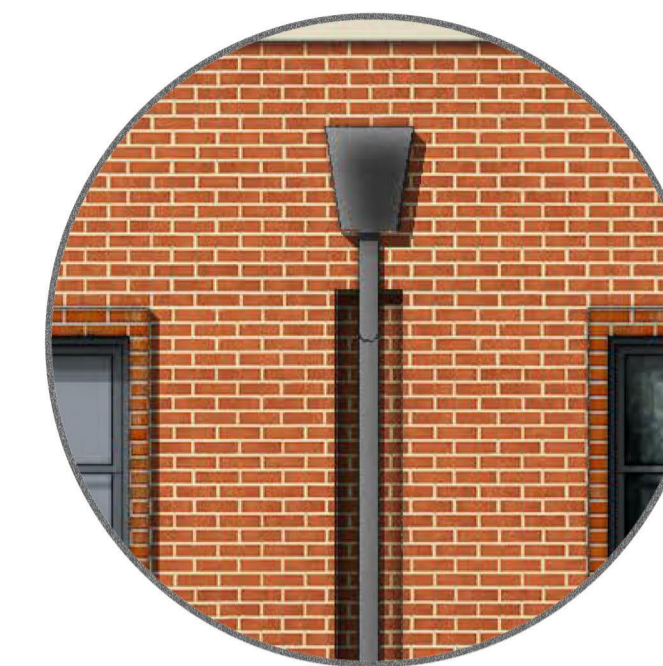
Contemporary framed roof level dormer windows



Vertical party wall dividers capped in stone



Stone banding edge to top of parapet



Rain water pipes recessed back into brick through a stepped channel



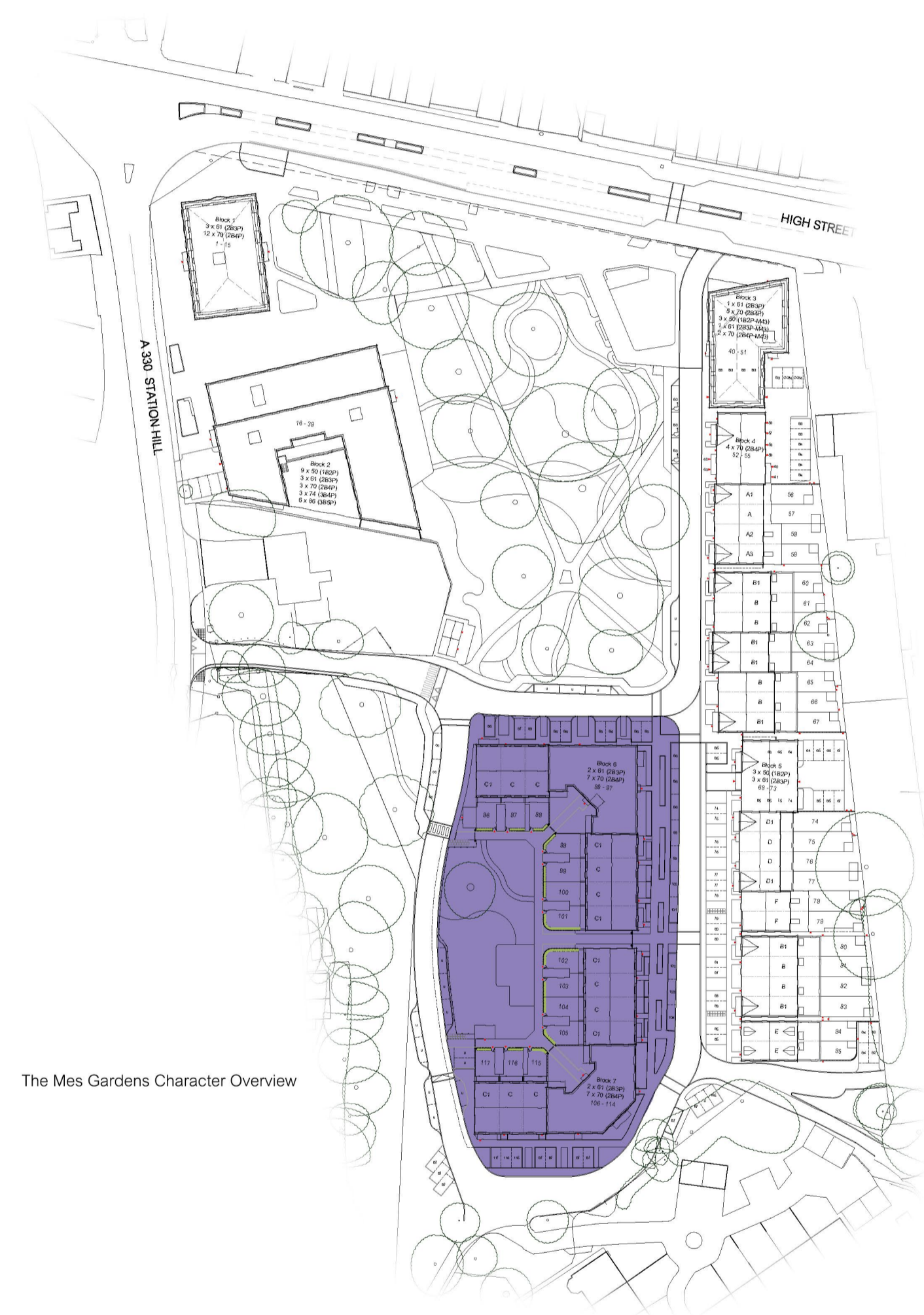
HT C1 Plot 101  
Front Elevation 01 (NTS)

HT C Plot 100

HT C Plot 99

HT C1 Plot 98

APARTMENT BLOCK 6  
Plots 89-97



The Mes Gardens Character Overview



Feature brick surrounds on front elevation windows, to compliment the main brick with a contemporary low profile grey coloured window



Ornate wrought iron balconies to first and second floor living rooms



Varying coloured front doors throughout the block



Flat glass porches for apartment entrances

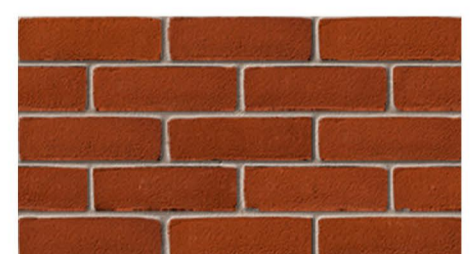
All brick types below used interchangeably on different sections throughout the character. All laid as 'stretcher bond'.



Red multi brick used on main face and feature bricks such as window surrounds

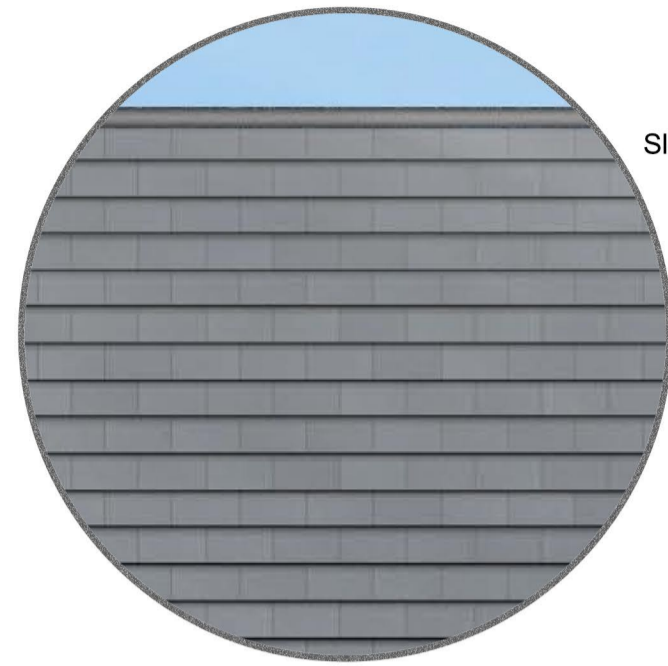


Red brick used on main face and feature bricks such as window surrounds



Dark red brick used on main face and feature bricks such as window surrounds

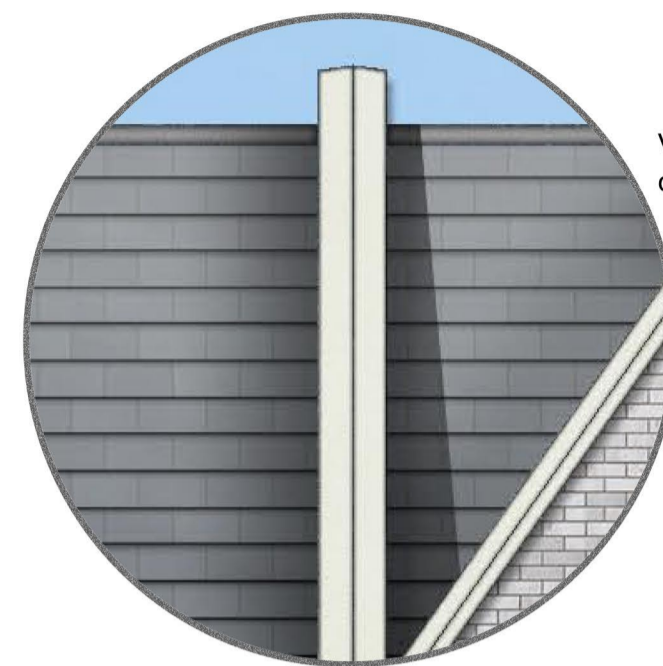
# THE TOWN HOUSES - CHARACTER OVERVIEW



Slate grey tiled roof



Gable fronted bookend houses



Vertical party wall dividers capped in stone



Tiered stone banding running along front and sides of the buildings' eaves and gables



Rain water pipes recessed back into brick through a stepped channel



HT B1 Plot 60    HT B Plot 61    HT B Plot 62    HT B1 Plot 63    HT B1 Plot 64    HT B Plot 65    HT B Plot 66    HT B1 Plot 67

## Front Elevation

◆ - Denotes obscure glazed & fixed shut feature window



Eastern Terrace Character Overview



Feature contrast brickwork surrounds on selected windows to compliment the main facing brick



Ornate wrought iron cantilevered balconies to first floor living rooms overlooking the parkland



Recessed and protected porches with traditional styled front doors in various colours

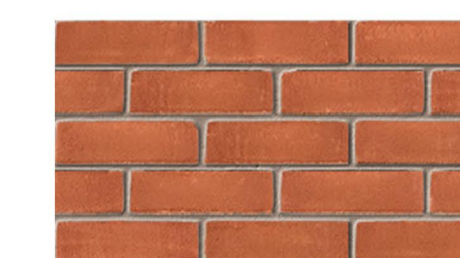


Brick surrounds around all first and second storey windows inset with a contemporary lowprofile grey coloured window

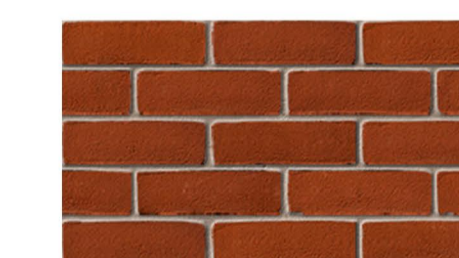
All brick types below used interchangeably on different sections throughout the character. All laid as 'stretch bond'.



Contrast grey brick used on main face



Red brick used on main face and feature bricks such as window surrounds



Dark red brick used on main face and feature bricks such as window surrounds



Red multi brick used on main face and feature bricks such as window surrounds